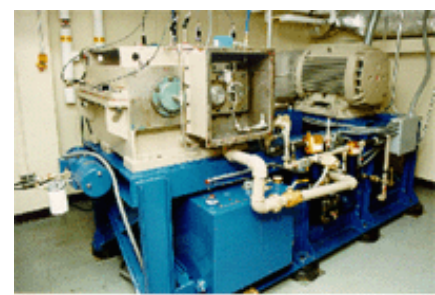
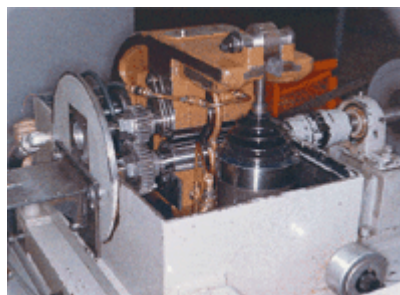


# Develop your Future Gear Engineers at Penn State/GRI

Support **Graduate** research at the Gear Research Institute (GRI), located at The Pennsylvania State University, to develop your workforce that will provide the technological breakthroughs that will keep you ahead of your competition in the future. The GRI provides research opportunities in gear geometry, manufacturing, metrology, metallurgy and testing, as students conduct various federal and industry sponsored research projects. An outline of this initiative is as follows:

## Graduate student research for MS/PhD (grant \$30,000/semester)

- Student selected with sponsor input
- Advanced research topic selected with sponsor input in areas of mutual interest (sponsor, student and faculty)
- State-of-the-art research and test facility
- Summer internship at sponsor's facility, paid by sponsor



For details contact Dr. Suren B. Rao at 814 865 3537 or [sbr1@psu.edu](mailto:sbr1@psu.edu)